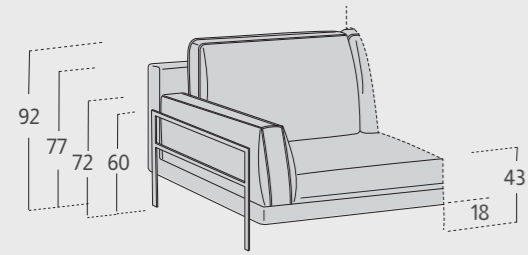
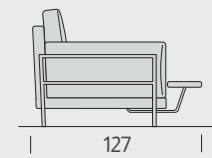


madison.



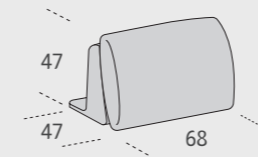
POSSIBILITÀ / POSSIBILITY



Sistema Feet
/ Feet system



PACCHETTO SCHIENA / BACKREST PACK



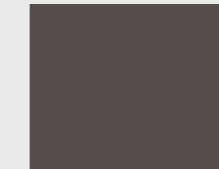
Pacchetto schiena Matrix
/ Matrix backrest pack

TIPOLOGIA PIEDE / FOOT TYPE

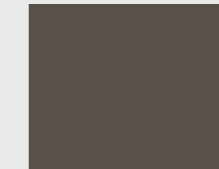


Piede Madison in metallo
finitura manganese di serie,
finitura anodic bronze
o nero opaco optional
Standard manganese
finish metal Madison foot,
anodic bronze or matte
black finish optional

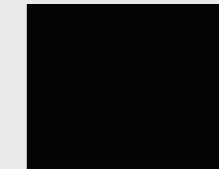
FINITURE PIEDE / FOOT FINISHES



Finitura manganese
di serie
Standard manganese
finish



Finitura anodic bronze
optional
Optional anodic bronze
finish



Finitura nero opaco
optional
Optional matte black
finish

INFORMAZIONI TECNICHE / TECHNICAL INFORMATION

Struttura: legno stagionato e agglomerato completamente rivestito in poliuretano espanso indeformabile e vellutino accoppiato.

Cuscini seduta: in poliuretano espanso indeformabile D 32, rivestiti in ovatta di poliestere gr 300.

Cuscini schienale: in piuma d'oca sterilizzata e fibra di poliestere suddivisi in compartimenti.

Cuscino bracciolo: in piuma d'oca sterilizzata e fibra di poliestere suddiviso in compartimenti.

Pacchetto schiena Matrix: composto da reggischiena in multistrato e nastri elastici in fibra polipropilenica e lattice da 60 mm rivestito in vellutino accoppiato gr 300, e cuscino integrato in piuma d'oca sterilizzata e fibra di poliestere suddiviso in compartimenti.

Rivestimenti: completamente sfoderabile in tessuto, parzialmente sfoderabile in pelle ed ecopelle. Nella versione con rivestimento in pelle ci potranno essere delle cuciture aggiuntive.

Sistema Feet: meccanismo elettrico in metallo, completamente sfoderabile in tessuto, non sfoderabile in pelle ed ecopelle.

Structure: seasoned and bonded wood, completely covered in non-deformable polyurethane foam and velveteen coupled.

Seat cushions: in D 32 non-deformable polyurethane foam, covered in 300 gr. polyester batting.

Back cushions: in sterilized goose down and polyester fiber, divided into compartments.

Armrest cushion: in sterilized goose down and polyester fiber, divided into compartments.

Matrix backrest pack: composed of backrest support in multilayer and elastic bands in polypropylene fiber and 60 mm latex, covered in 300 gr. velveteen coupled, and included cushion in sterilized goose down and polyester fiber, divided into compartments.

Upholstery: fully removable in fabric, partially removable in leather or in eco-leather. In the leather version there could be additional sewings.

Feet system: electric mechanism in metal, upholstery is fully removable in fabric, not removable in leather or in eco-leather.